

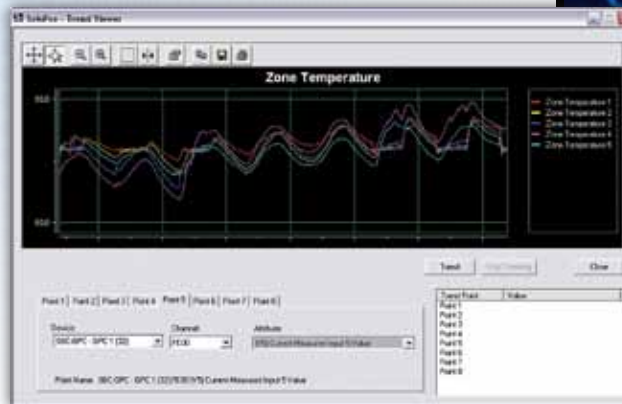
DESCRIPTION

SoloPro™ is a Microsoft Windows®-based interface package that provides easy-to-use, menu-driven access to American Auto-Matrix® unitary controllers. The program uses the American Auto-Matrix PUP communications protocol to allow local-operator configuration of controllers on EIA-485 shielded, twisted-pair networks or through a Matrix Area Controller via IP over Ethernet.

SoloPro™ is primarily a commissioning tool that allows the performance of a variety of functions such as attribute-value capturing, monitoring/modifying of values, and establishment of off-line setup capabilities. The program's easy-to-use menu system supplies on-line help at the touch of your fingertips.

FEATURES

- Commissioning and flash updating accomplished through IP or serial communications (AspectFT Matrix; IFC-SSB/485)
- Lists of units sorted by type, version, serial number, manufacturing date, and description
- Real-time trending of attribute values
- Option to create unit lists for customized network installations
- A specialized controller file editor that reduces the risk of end-user errors
- Simultaneous viewing of multiple controller and programming files
- Compilation and upload/download of custom programs
- Syntax highlighting while editing SPL programs
- Time synchronization independent of PC clock settings
- Dynamic group monitoring of points
- Automatic controller searches through the Locate Unit feature
- Firmware upgrades for all Smart Building Controls™ (SBC) unitary controllers through flash updates



FEATURES

AspectFT Matrix Area Controller

Through use of the AspectFT Matrix Area Controller, SoloPro provides users and technicians the ability to setup, configure and commission SOLO and SBC Family controllers utilizing PUP over IP. Provided that the correct communication ports are opened or forwarded properly through network equipment such as routers and firewalls, connectivity to devices can be established across Wide Area Network (WAN) connections common on large campuses, enterprise installations, and even Internet connections.



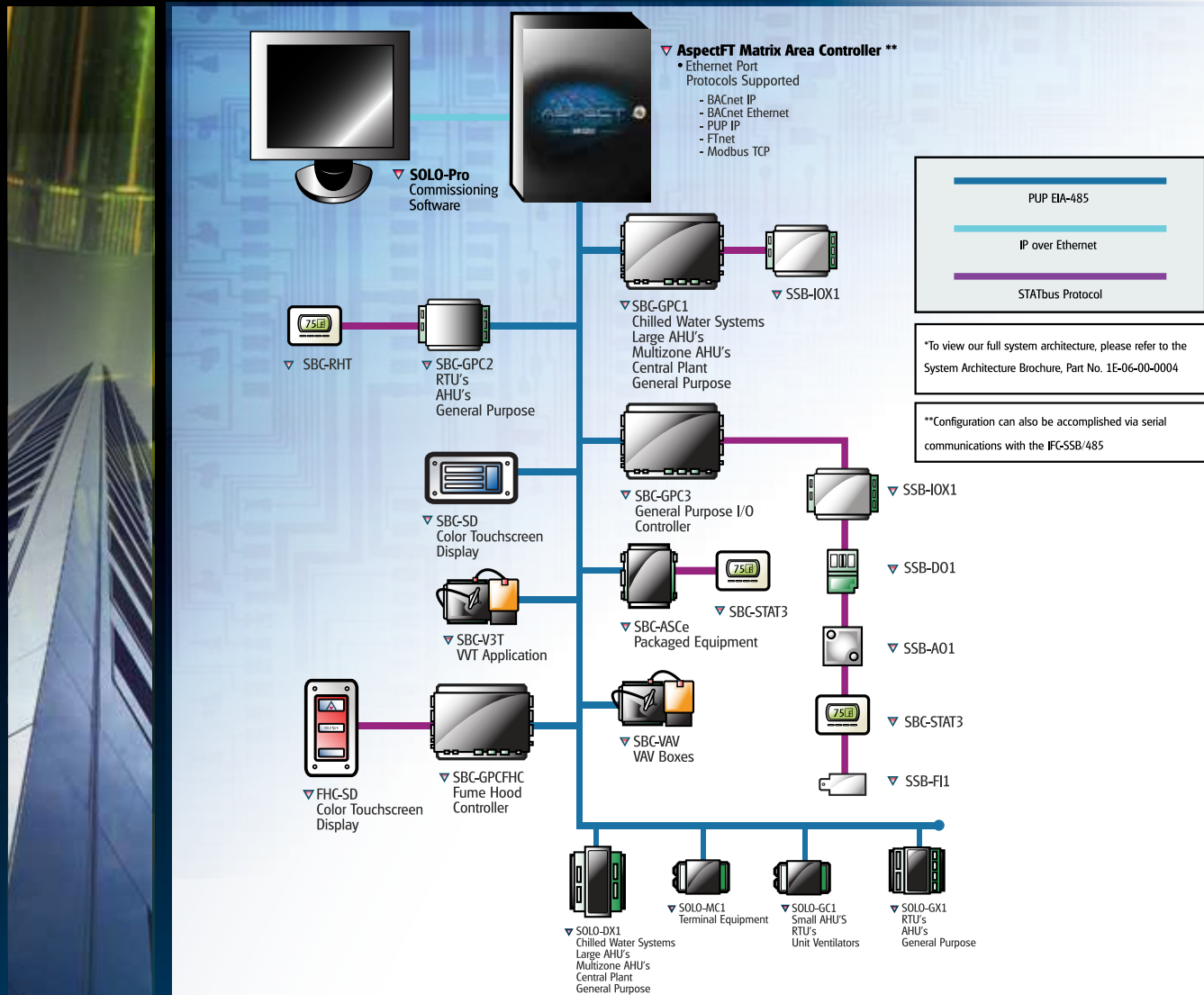
¹ This product conforms to BTL standards when configured as a BACnet router

SOLO-Pro

IP or Serial - Based Commissioning Utility

AMERICAN
AUTO-MATRIX®
SMART BUILDING SOLUTIONS®

IP CONFIGURATION ARCHITECTURE



SPECIFICATIONS - SOLO-PRO v.2

PC Requirements

- 500Mhz Intel Pentium III Processor (minimum)
- 256MB RAM
- Microsoft Windows 2000 or XP

SPECIFICATIONS - IFC-SSB/485

Host Connection

- Connection: USB, Type-B connection port
- Power rating: 5V, 320mA max

EIA-485 Connection

- Connection: 2 position, 5.08mm Eurostyle
- Line protection: PTC and Tranzorb
- Data Isolation: GMR Data Isolation
- Termination: 249 ohm, switch selectable
- Biasing: 3.32k, switch selectable

STATbus (SSB) Connection

- Connection: 4 position, 3.81mm Eurostyle connector

Operating Systems Supported

- Windows 2000 (SP4 or greater)
- Windows XP (SP2 or greater)
- Windows 2003 (R2 or greater)

American Auto-Matrix is a Service-Disabled Veteran-Owned Small Business / Woman-Owned Business (CCR Cage #4LL80)

One Technology Lane Export, Pennsylvania 15632-8903 U.S.A Tel (1) 877-AAM-HVAC Fax (1) 724-327-6124

Email: aam@aamatrix.com On the Web: www.aamatrix.com