

DESCRIPTION

The Integra™ is a compact integration platform, specifically designed for commercial applications, that offers seamless integration capabilities for common communications protocols and legacy systems, creating a complete real-time supervisory network. The Integra™ suite includes a growing library of communication drivers, as well as browser based Graphical User Interface, permitting users to view and control fundamental systems without the need for dedicated workstations and client software.

FEATURES

- Integrates seamlessly with American Auto-Matrix® PUP, PHP and BACnet® protocol products with the appropriate drivers
- Fully compatible with popular open systems protocols including BACnet®, LonWorks®, Modbus® and OPC® with the appropriate optional drivers
- Complete high level functionality including alarming, trending, scheduling, and custom sequencing
- Powered by the Niagara^{AX} Framework®, a universal software layer that provides the means to connect many devices through a unified network appliance
- JAVA-based graphical user interface that is accessible from any standard web-browser and does not require a proprietary software plug-in
- Capable of stand-alone or networked operation to allow sharing of data between multiple Integra™ devices
- Optional serial communication ports for flexible protocol device networking
- Embedded RISC microprocessor platform eliminates the need to maintain a separate firewall or virus scan for the device
- Intuitive, multi-tier user security, configurable to allow/prevent access
- Real-time control functions provided as constant streams of data from individual systems and instantaneously transformed into a common model within the Integra™
- Supports up to 2 optional communication boards.



SPECIFICATIONS

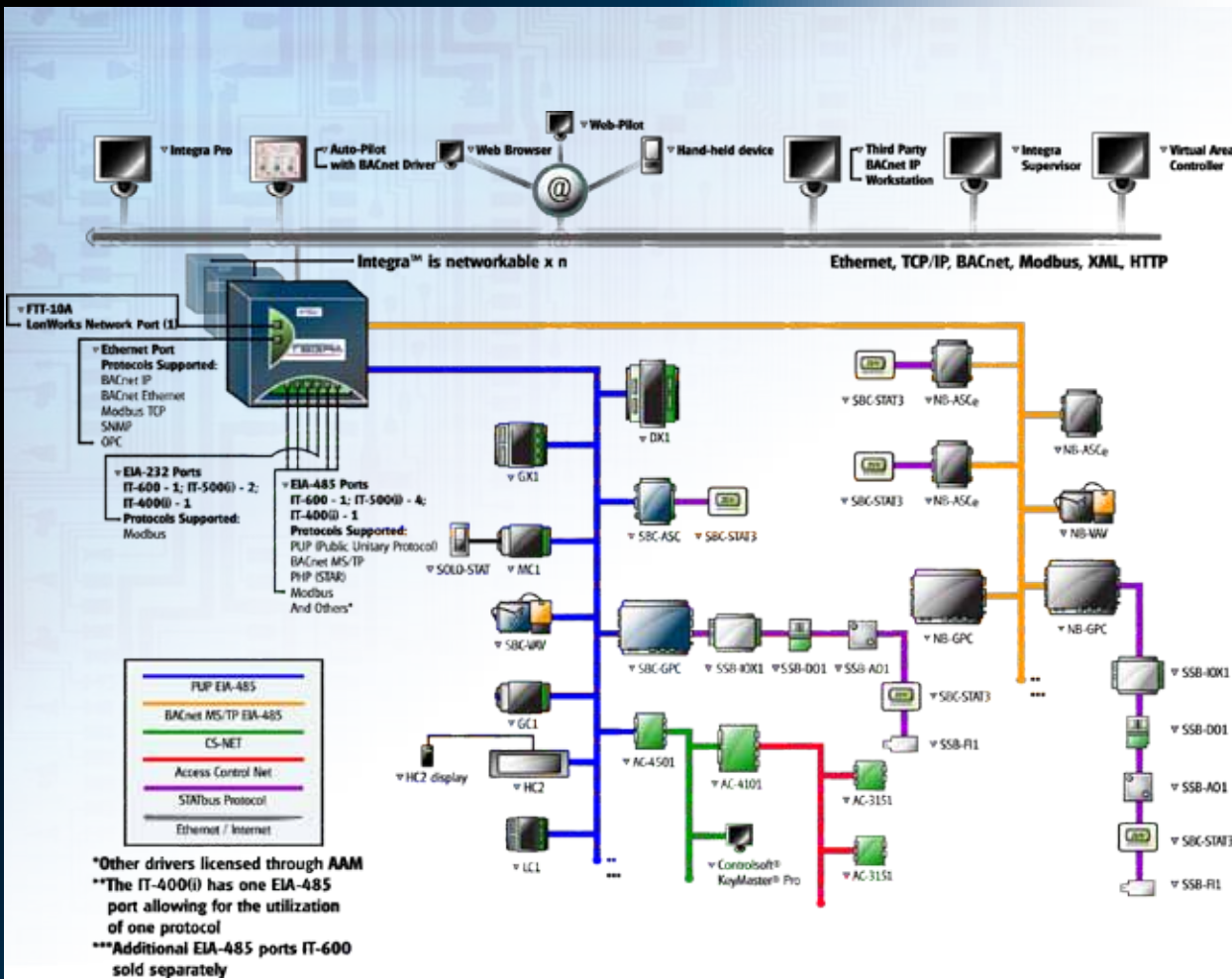
Platform - Integra™ : IT-600	Operating System
<ul style="list-style-type: none"> • PowerPC 440 524 MHz processor • Integra Control Engine - with direct I/O support objects • 128MB DDR RAM & 128 MB Serial Flash- FCC Class "A" computing Device 	<ul style="list-style-type: none"> • QNX® Operating System with IBM J9 JavaVirtual Machine • Integra™ Integration Software

Communications	Battery Backup
<ul style="list-style-type: none"> • Two 10/100 Mb Ethernet port - RJ-45 connection • One EIA-232 ports with DB9 connector (sold separately) • One EIA-485 ports (up to 76,800 baud) with Weidmuller connectors (sold separately) • One LonWorks port - FTT-10 with Weidmuller connector (sold separately) • Optional auto-dial / auto-answer 56K modem; RJ-11 connector (sold separately) 	<ul style="list-style-type: none"> • Battery backup provided for all on board functions • Battery is monitored and trickle charged • Battery maintains processor operation through power failures for a pre-determined interval, then writes all data to flash memory, shuts processor down, and maintains clock for a minimum of five years



INTEGRA™
 IT-600, Integration Platform
 AMERICAN
 AUTO-MATRIX®
 SMART BUILDING SOLUTIONS®

SYSTEM ARCHITECTURE



SPECIFICATIONS - CONTINUED

Power Supply

- Varies by regional locale - Sold Separately

Chassis

- Construction: Plastic, din rail or screw mount chassis, plastic cover
 - Cooling: Internal air convection
 - Dimensions: 6.719" wide X 4" high

Resource Capabilities

- Maximum devices per RS-485 port = 32

Environment

- Operating temperature range: 0° to 50°C (32°F to 122°F)
 - Storage Temperature range: 0° to 70°C (32°F to 158°F)
 - Relative humidity range: 5% to 95%, non-condensing

Agency Listings

- UL 916, C-UL listed to Canadian Standards Association (CSA) C22.2 No.
 - 205-M1983 "Signal Equipment", CE, FCC part 15 Class A.

American Auto-Matrix is a Service-Disabled Veteran-Owned Small Business / Woman-Owned Business (CCR Cage #4LL80)

One Technology Lane Export, Pennsylvania 15632-8903 U.S.A Tel (1) 877-AAM-HVAC Fax (1) 724-327-6124

Email: aam@aamatrix.com On the Web: www.aamatrix.com

