

**DESCRIPTION**

The SAGE<sup>MAX</sup>™ is a communications-intensive area controller that offers powerful programming capabilities, ideal for stand-alone control and monitoring applications.

SAGE<sup>MAX</sup> combines a multi-tasking, real-time operating system with high-performance microprocessor technology to satisfy today's complex communication, monitoring, and control demands. SAGE<sup>MAX</sup> is the ultimate in high-speed, multi-user, intelligent building control, and information systems.

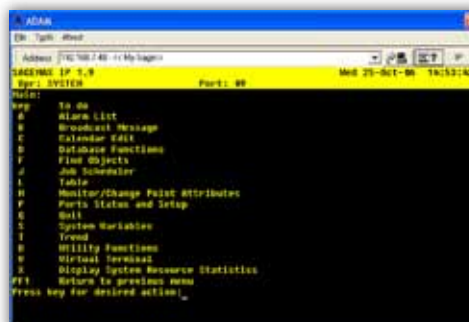
**FEATURES**

- Multiple communication port options including half-duplex EIA-485, full-duplex RS-232, and 10BaseT Ethernet
- Direct connection capabilities for dumb terminals with available VT100 and VT102 data link options
- Easy to use menu driven access for setup and configuration
- Communication capabilities to legacy American Auto-Matrix product via PHP, PEERnet, and XANP protocols
- Object oriented database design, allowing for easy access to point information
- Powerful alarm and event management with AAM-based unitary controllers including the ability to log detailed criteria and route notifications from the system to local printers, dial-out recipients, and graphical user interface stations
- Detailed trend generation and archiving, allowing users to store trend data either locally at the Sage<sup>MAX</sup> hard disk drive, or be stored for uploading by a graphical user interface station. Trends can be generated in many ways including time anchored, circular, and sample based
- Custom group creation provides the ability to create menu driven environments for users to easily navigate through the object oriented database over dial-up, direct connect, or Ethernet connections
- Unparalleled custom programming options using SPL (Sage Programming Language). SPL allows users to create any sequence necessary to facilitate advanced automation and control. Additionally, SPL provides the means to automate job services, report capabilities, customize alarms, as well as customize many other discrete functions

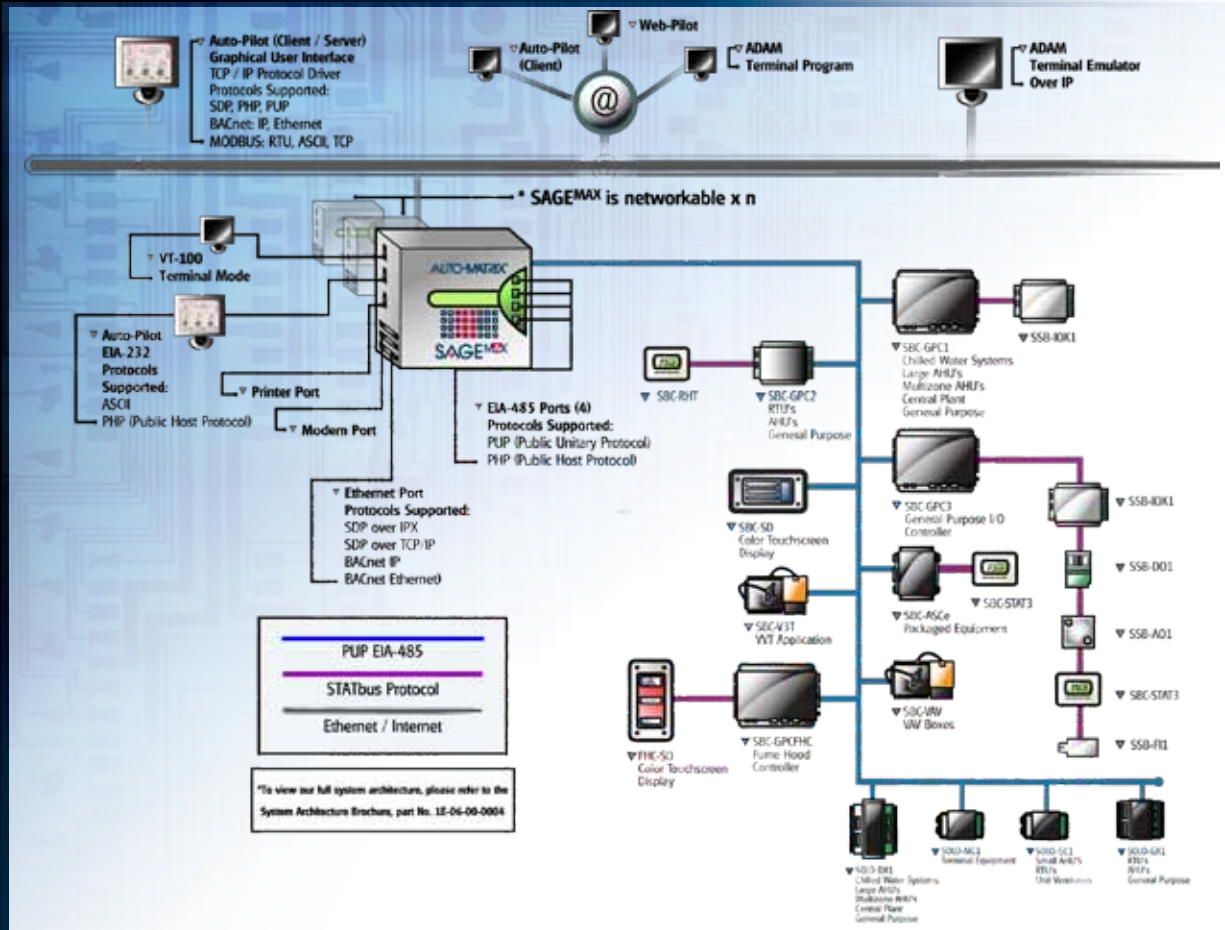
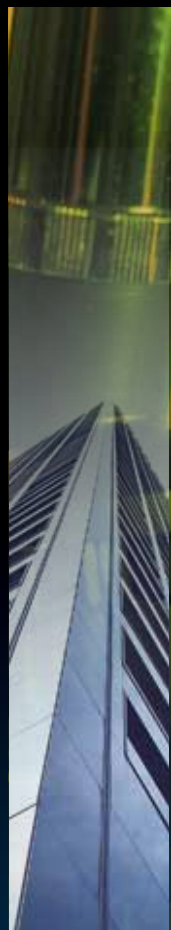


**ADAM Software Utility and SAGE<sup>MAX</sup>**

Included with every Sage<sup>MAX</sup> purchase is the ADAM utility. ADAM is a stand-alone software tool that allows users to open Virtual Terminal sessions to communicate with an IP-enabled Sage<sup>MAX</sup>. This free utility can be used either locally at the site or in conjunction with an active Internet connection (provided the appropriate network ports are open). Similar to direct dumb terminal connections, users have the ability to navigate through the Sage<sup>MAX</sup>'s intuitive text mode and perform general setup and configuration of area controller functions such as point database management, alarm and trend generation, as well as editing custom program sequences and the ability to view custom generate point groups.



SYSTEM ARCHITECTURE



SPECIFICATIONS

Communication Ports

- Two EIA-232D ports
- Control signals: TXD, RXD, RTS, CTS
- Communications speed: 110 to 576k baud, programmable
- Terminations: DB9P connector network protection: tranzorbs, optical, and magnetic isolation
- Four EIA-485 ports
- Network configuration: multidrop up to 5,000 ft (1.5 km.) per trunk; dual trunk 2-wire/single trunk 4-wire
- Communications speed: 110 bps to 576k baud, programmable
- Terminations: pluggable 0.2 in. (5.08 mm.), 3-position terminal blocks (2 each port)
- Network protection: dual tranzorbs plus PTC; optical, and magnetic isolation

Communication Ports

- Modem, optional (Hayes-compatible)
- Communications speed: 56k baud
- Termination: Integral RJ-11 jack
- Parallel port (Centronics interface)
- Termination: DB25S connector
- Ethernet Port (optional)
- Control signals: TXD, RXD, RTS, CTS
- Communications speed: 10 Mbps

Mounting

- Flat surface, 1/2" teardrop holes (1/4-20 recommended)

Operating Environment

- 41 to 113°F (5 to 45°C)
- 0 to 10,000 ft. (0 to 3 km.)
- 20 to 80% RH noncondensing

Power Supply

- 100/120/240VAC 50/60Hz, 130VA protected at 2.5A
- 0.375 in. (9.52 mm.) fixed terminal block

Dimensions

- Shipping weight: 25 lbs. (11.3 kg.)
- Overall size 13.0 x 14.2 x 6.2 in. (33.0 x 36.1 x 15.7 cm.)

Agency Listings

- UL listed 916, Management Equipment, Energy (PAZX)
- FCC rules Part 15 Class B computing Device
- UL Recognized 873, Component-Temperature Indicating and Regulating Equipment
- Complies with CE directives and standards

American Auto-Matrix is a Service-Disabled Veteran-Owned Small Business / Woman-Owned Business (CCR Cage #4LL80)

One Technology Lane Export, Pennsylvania 15632-8903 U.S.A Tel (1) 877-AAM-HVAC Fax (1) 724-327-6124

Email: aam@aamatrix.com On the Web: www.aamatrix.com

